



**Children's
Centre**
for Early Childhood
Development and Parenting



O'SULLIVAN BEACH CHILDREN'S CENTRE

PRESCHOOL CONTEXT STATEMENT

Updated: 17/5/2012

Centre number: 3665

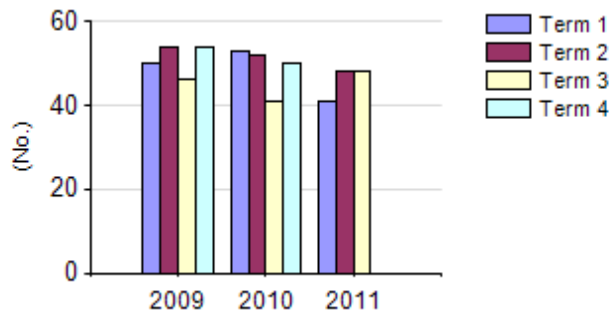
Centre name: O'Sullivan Beach Children's Centre

1. General information

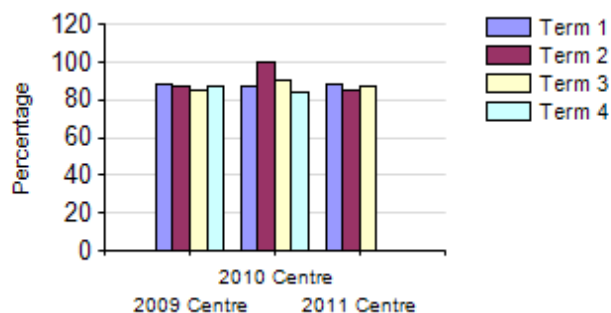
- Preschool Director: Leanne Mattsson
- Postal address: 51A Galloway Road, O'Sullivan Beach, S.A . 5161
- Location address: 51A Galloway Road, O'Sullivan Beach, S.A. 5161
- DECS Region: Southern Adelaide region
- Geographical location – 31km South from GPO Adelaide
- Telephone number: (08) 8382 2850
- Centre Mobile : 0428 944 985
- Fax number: (08) 8326 8258
- Preschool website address: www.osullivankgn.sa.edu.au

- Preschool e-mail address: kindy.director@osullivankgn.sa.edu.au

- Enrolment



- Attendances



The centre operates an integrated occasional care and preschool service, this includes – 9 sessions/ week Preschool

2 sessions/week occasional care Under 2 year olds

6 sessions/week occasional care Over 2 yearolds.

The centre also supports an integrated pre-entry program and early entry as required.

The centre also supports crèche for parenting programs at the centre at times.

- Co-located/stand-alone:

The Children’s Centre is co-located on the same site as O’Sullivan Beach Primary School and Southern Montessori.

- Programs operating at the preschool

- ❖ Pre Entry – 1 session per week, integrated into the preschool program.

This is offered the term prior to commencing date of eligible preschool.

Early Entry – 1 session per week 2 terms prior to their eligible preschool year. (as per the DECD enrolment policy).

- ❖ **Sessional Kindergarten for eligible children**
Flexible termly choice from 9 sessions per week-

Monday	8.45 – 11.45am
	12.15 – 3.15pm
Tuesday	8.45 – 11.45am
	12.15 – 3.15pm
Wednesday	8.45 – 11.45am
	12.15 – 3.15pm
Thursday	8.45 – 11.45am
	12.15 – 3.15pm
Friday	8.45 – 11.45am

- ❖ **Long Day Care service**
This service is fully integrated into the preschool program, offered every day. Full days, half day , before and after kindy care.
Child care operating hours are 7.30am-6pm, 50 weeks/year.

- ❖ **Lunch/Full Day Program-** Full days are available Monday to Thursday with a lunch care program to meet the community and families needs. This is only available for children attending the preschool program.

- ❖ **Bilingual Support –** At present the centre has nil request for Bilingual support at present but have identified a number of families accessing playgroups in the parenting programs.

- ❖ **Preschool Support-** The centre maintains a high number of children with identified special needs. High percentage of speech and language issues, emotional and behavioural issues, as well as diagnosed Developmental delays and health issues. Preschool support allocation average allocation over the last few years is at 22 hours/week.

- ❖ **Children’s Centre Programs-** delivered within the preschool programs and also as a parenting program for the community.
These are supported and facilitated through centre and leadership planning with our Multi Disiplinary team.
Community Development Co ordinator
Family Service Co ordinator
Allied Health Team – Speech Pathologist and Occupational Therapist
DECD Support Services – Speech Pathologist, Disability Co ordinator and Psychologist.

Partnership Group – Anglicare, Smith Family, Centre Link. C&YHS, Onkaparinga Council and Immunisations, Mary Hood and Attachment and Relationship Counselling, University SA, Disability SA Workskill. Families SA and Save the Children, Southern Primary Health.

- Bus program – Transport support for vulnerable and disadvantage families to support children and parents access to the centre. Supports special programs and families access to medical support as required.

2. Key Centre Policies

- National Quality Standards and DIAF, Children’s Centre Outcomes Framework and the AEDI

- **Vision** for O’Sullivan Beach Children’s Centre
(Guiding Principle or Core business)

O’Sullivan Beach Children’s Centre in partnership with families, children and the community strive to promote and provide opportunities for everyone, by creating a safe, supportive, respectful, compassionate, inclusive and engaging place to be, that nurtures a sense of belonging for all.

With a focus for children in the early years and their families, providing a wrap around, multi agency service approach to working collaboratively.

The staff and the programs for the children support them and families, to be successful, competent and capable learners. Through having respectful connections with families and staff, which will foster partnerships that support and promote children’s health, life long learning and wellbeing.

- We will seek to –

*Foster a culture of mutual respect for each other, respect and understanding for the community and respect for the environment.

*Ensure that empathy is evident in everything we do.

*Foster a strength base approach that supports the learning environment and encourages best early childhood practises, which builds on children’s discovery and the families life long learning.

*Strive for positive learning outcomes for all.

Values

Respect

Honesty

Working Together

Quality Education and care

Acceptance and Inclusion

Joy in Learning

Centre Priorities – Site Improvement Plan and QIP

- ❖ WellBeing – focus on staff and quality practise enhancing quality learning.
- ❖ Integration and the Children’s Centre Framework – focus of partners hips and
Child-care : wrap around project
- ❖ Early Years Learning - focus on Literacy and transition

3. Curriculum

- Framework used: Early Years Learning Framework- Being , Belonging and Becoming: Respect Reflect and Relate, National Quality Standards and Children’s Centre Outcomes Framework
- Core Values- Early Childhood Paedogogy, Strength Base Practise, Circle of Sercurity, SMART strategies, Relationships and Child Focused.
- Specific curriculum approaches-
Targeted Programs – “Getting ready for school ‘
 “Getting ready for Kindy”
 Walk n Talk
 Vegie Fun for every one
 Cooking – Eat smart Think smart
 Transtion to school program
 “You can Do it” program
 “Fun friends “ program
 SMART and FLO approaches
- Joint programmes/special curriculum projectsEarly Year Pedagogy Working Party, was developed to support the transition of children to school, as well as support the links between school and the preschool in the best quality of practise.

4. Centre Based Staff

- Staff Profile-
 - 1.0 Director –
 - 1.0 Teacher –
 - 0.8 Teacher –
 - 0.3 ECW – Preschool –
 - 0.1 ECW – Preschool –
 - 0.2 ECW- Preschool –
 - 0.6 ECW – Occasional Care –
 - 0.2 ECW – Occasional Care –
 - 0.5 Administraion –
 - 1.0 Community Development Co ordinator –
 - 1.0 Family Service Co ordinator –

Child care staff include 5 Diploma trained staff and 2 Certificate 3 staff.

- Performance Management Program
Preschool staff use the RRR to inform their practice. PDR are undertaken through individual meetings termly and also as a group in staff meetings.
- Access to special support staff- The centre has access to all DECD support services, as well as partnerships with allied health and community health and NGO.

5. Centre Facilities

- Buildings and grounds
The building has been purposefully built as a Children's Centre with the provision for Preschool, care service and community programs.
It has been designed with the focus of integration for both service provision and staff.
It was opened in April 2011 by Jay Weatherill and located within the O'Sullivan Beach Primary School site which also has Southern Montessori Primary.

- Capacity (per session)- 60 children capacity in the main activity area
- Centre Ownership- DECD
- Access for children and staff with disabilities- The centre is built on flat ground with disable car parking, disability toilets both public and children, and wheel chair access.
- Transport to the centre can be difficult is a family does not have a car. The public transport has been improved recently with ½ hourly STA times.
- Child care at present is very difficult for families to access, Christies Beach is the nearest care facility available but difficult if no transport.

6. Local Community

- General characteristics: Situated near the coast in an older well established area between Christies Beach and Lonsdale. There are a number of light industrial zoned factories and is near the old Mobil Oil Refinery, which is now shut down and in a moth ball state. There a number of Aboriginal allocated housing sites in the area and Housing Trust allocation.
- Parent and community involvement in the preschool:- Parent involvement fluctuates within the centre, with families requiring a high level of support. The Governing Council is well attended, and the parenting programs and community involvement in other services is highly valued. Parents have a strong sense of belonging and connection to the centre.

- Schools to which children generally transfer from this preschool
Approx 50% of the children transition to O’Sullivan Beach Primary, with the remaining percentage of children, transitioning to St.Johns the Apostle, Southern Montessori, Christies Beach Primary, Port Noarlunga and further a field.
- Other local care and educational facilities, - The O’Sullivan Beach Primary School has a OHSC service and vacation care provision at the school.
- Commercial/industrial and shopping facilities- The Children’s Centre and School site is located only 5-10minutes
- Other local facilities- O’Sullivan Beach Primary School, Southern Montessori, O’Sullivan Beach Sportsman Club and with transport support there is private child care at Christies Downs and Christies Beach.
Noarlunga Hospital is located at the Noarlunga Centre with also Families SA, Centrelink, GP Plus and Southern Domestic Womens.
- Availability of staff housing- Not Applicable
- Accessibility
STA bus service is available directly outside the Children’s Centre, which connects to Colonnades.
This services runs half hourly.
- Local Government – Onkaparinga Council – 8384 0666

7. Further Comments

- Partnership arrangements with other groups
O’Sullivan Beach Children’s Centre is developed around a Multi Disiplinary team, with a partnership model with Health, Community, and Non Government organizations.
Our partners also consist of Anglicare, Child and Youth Health, South Primary Health, Smith Family, Centre Link, Mary Hood with Relationship and Attachment Centre, Noarlunga Families SA , Centre link and ATSI Health Team.
- In 2012 we have 15 Aboriginal children attend the preschool, and 2 occasional care.
- At present 3 GOM Children accessing the preschool program and high number of vulnerable children.

